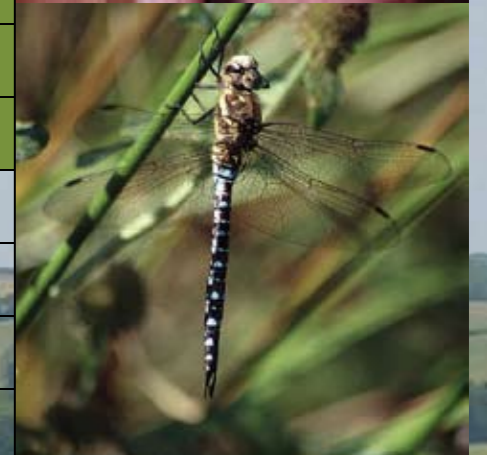


ECOLOGICAL SURVEY SEASONS

- Optimal Survey Time
- Sub-optimal Survey Time
- Survey Not Possible



	Jan	Feb	Mar	Apr	May	June	July	Aug	Sept	Oct	Nov	Dec
BADGERS	Optimal	Optimal	Optimal	Optimal	Sub-optimal	Sub-optimal	Sub-optimal	Sub-optimal	Sub-optimal	Optimal	Optimal	Optimal
BATS (Initial survey)	Optimal	Optimal	Optimal	Optimal	Optimal	Optimal	Optimal	Optimal	Optimal	Optimal	Optimal	Optimal
BATS (Hibernation roosts)	Optimal	Optimal	Optimal	Optimal	Optimal	Optimal	Optimal	Optimal	Optimal	Optimal	Optimal	Optimal
BATS (Summer roosts)	Sub-optimal	Sub-optimal	Sub-optimal	Sub-optimal	Optimal	Optimal	Optimal	Optimal	Optimal	Optimal	Optimal	Optimal
BIRDS (Breeding)	Sub-optimal	Sub-optimal	Optimal	Optimal	Optimal	Optimal	Sub-optimal	Sub-optimal	Sub-optimal	Sub-optimal	Sub-optimal	Sub-optimal
BIRDS (Overwintering)	Optimal	Optimal	Optimal	Optimal	Optimal	Optimal	Optimal	Optimal	Optimal	Optimal	Optimal	Optimal
BARN OWL	Optimal	Optimal	Optimal	Optimal	Optimal	Optimal	Optimal	Optimal	Optimal	Optimal	Optimal	Optimal
DORMICE (Nut search)	Optimal	Optimal	Optimal	Sub-optimal	Sub-optimal	Sub-optimal	Sub-optimal	Sub-optimal	Sub-optimal	Sub-optimal	Sub-optimal	Sub-optimal
DORMICE (Nest tubes)	Optimal	Optimal	Optimal	Optimal	Optimal	Optimal	Optimal	Optimal	Optimal	Optimal	Optimal	Optimal
GREAT CRESTED NEWTS (Aquatic)	Sub-optimal	Sub-optimal	Sub-optimal	Sub-optimal	Sub-optimal	Sub-optimal	Sub-optimal	Sub-optimal	Sub-optimal	Sub-optimal	Sub-optimal	Sub-optimal
INVERTEBRATES	Optimal	Optimal	Optimal	Optimal	Optimal	Optimal	Optimal	Optimal	Optimal	Optimal	Optimal	Optimal
NATTERJACK TOADS	Optimal	Optimal	Optimal	Optimal	Optimal	Optimal	Optimal	Optimal	Optimal	Optimal	Optimal	Optimal
OTTERS	Optimal	Optimal	Optimal	Optimal	Optimal	Optimal	Optimal	Optimal	Optimal	Optimal	Optimal	Optimal
REPTILES	Optimal	Optimal	Optimal	Optimal	Optimal	Optimal	Optimal	Optimal	Optimal	Optimal	Optimal	Optimal
WATER VOLES	Optimal	Sub-optimal	Sub-optimal	Sub-optimal	Sub-optimal	Sub-optimal	Sub-optimal	Sub-optimal	Sub-optimal	Sub-optimal	Sub-optimal	Sub-optimal
WHITE-CLAWED CRAYFISH	Optimal	Optimal	Optimal	Optimal	Optimal	Optimal	Optimal	Optimal	Optimal	Optimal	Optimal	Optimal
EXTENDED PHASE 1	Optimal	Optimal	Optimal	Optimal	Optimal	Optimal	Optimal	Optimal	Optimal	Optimal	Optimal	Optimal
DETAILED BOTANICAL	Optimal	Optimal	Optimal	Optimal	Optimal	Optimal	Optimal	Optimal	Optimal	Optimal	Optimal	Optimal



Lindsay Carrington Ecological Services Ltd

Unit 2 Rempstone Barns, Rempstone, Corfe Castle, Wareham
Dorset, BH20 5JH

Tel: 01929 477115 e-mail: enquiries@ecological-services.co.uk
www.ecological-services.co.uk